

**new**  
2020

# Slim AluClad over wood F38

LIGHT:  
A KEY FEATURE

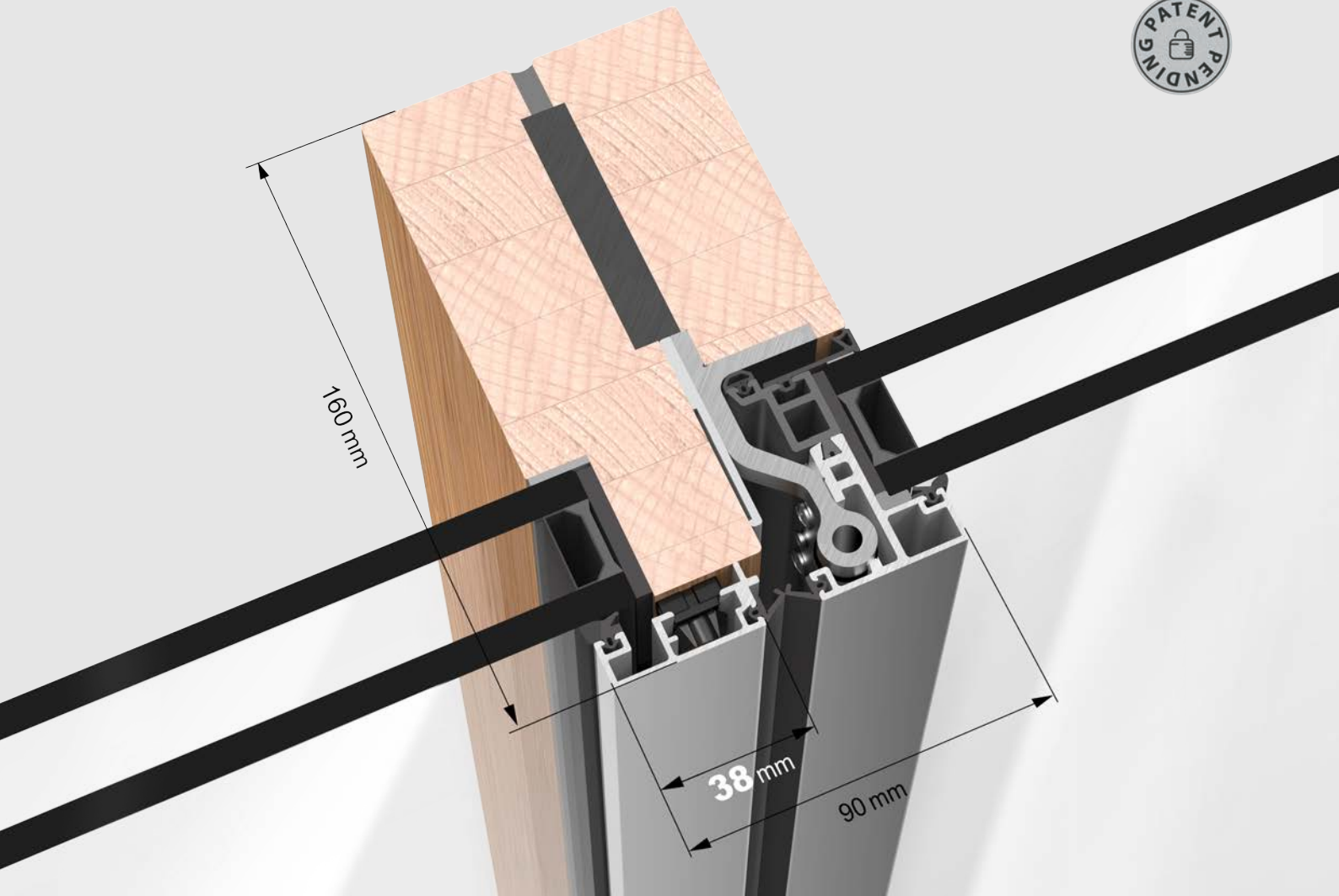


**TOTAL**  
FACADE SOLUTIONS



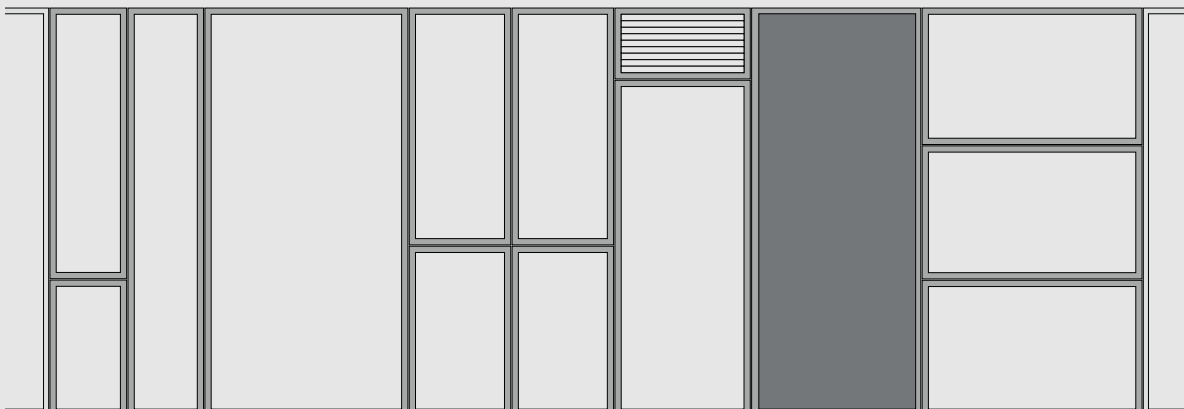
OPEN OUT

**The slimmest  
timber-composite  
window & door  
system ever!**



**Slim AluClad over wood F38 is a revolution in glazing where minimal timber composite frames can at last achieve a high thermal and acoustic performance. The minimalism of the Slim AluClad over wood F38 frame sightline means maximum light into the room. Equal sightlines between operable units and fixed lights allow total freedom in the design of your facade, irrespective of each desired infill: glass, insulated panels, louvres.**

**Safe integration between frames of different sizes.**



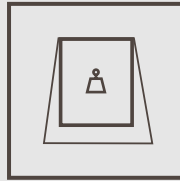
## available typologies and main highlights

### side hung



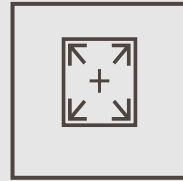
sash weight  
up to 90 kg

### top hung



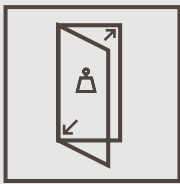
sash weight  
up to 90 kg

### fixed light



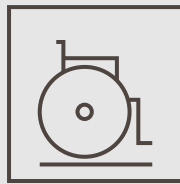
up to 3500 mm  
height

### entrance door



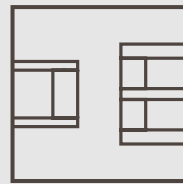
sash weight  
up to 120 kg

### low threshold

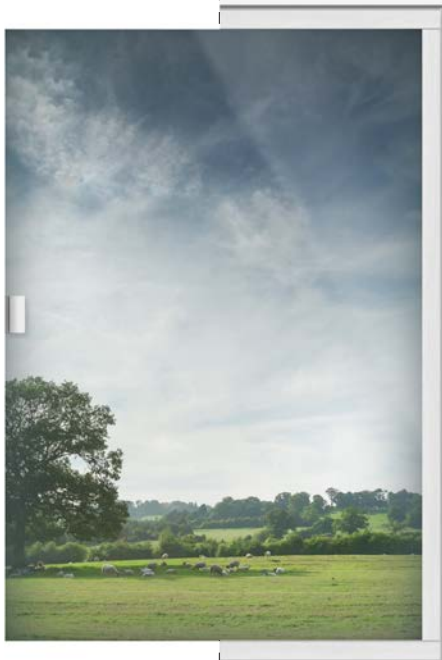


lifetime homes  
compliance

### glass thickness 31-47 mm



Uw values  
1,3-0,82 W/(m<sup>2</sup>K)



**FRAMELESS APPEAL**  
the 40mm timber frame  
can be wholly covered  
by the plasterboard.



**EVERYTHING CONCEALED**  
the hinges, the handle...  
the window frame.  
Pure vision.



# Slim AluClad over wood F38

LIGHT:  
A KEY FEATURE

**TOTAL**  
FACADE SOLUTIONS

**Total Facade Solutions**

748 Marine Dr.  
North Vancouver, BC V7M 1H3  
Canada

T: +1 778-729-1575

[contact@totalproject.ca](mailto:contact@totalproject.ca)

[www.totalfacadesolutions.com](http://www.totalfacadesolutions.com)

