




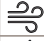




OPEN
IN

TOTAL
FACADE SOLUTIONS

TRIPLE GLAZING **U_w=0,8 W/m²K**

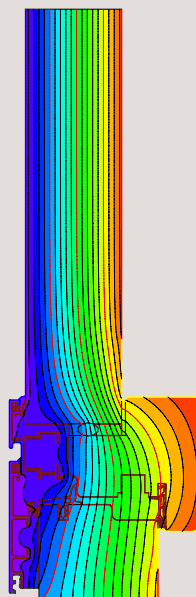


Material		Wood-Aluminium
Thermal insulation		U _w = 0,8 W/m ² K
Insulating glass		Triple glazing thickness 50 mm
Acoustic insulation		R _w up to 46 dB
Security hardware		Up to RC2
Dimensions in mm.		
Thickness of sash		98,5 x 70 mm
Thickness of frame		77,5 x 72,5 mm
Visible section sash + frame		106 mm
Visible section middle clamp		116 mm
Air permeability		CLASS 4
Water tightness		CLASS E1050
Wind load resistance		CLASS C5

The thermal transmittance values are calculated according to UNI EN 10077/1-2018, UNI EN 10077/2-2018, UNI EN 10456-2008, UNI EN 673-2011 standards, in reference to a window with 1 sash WxH (1230x1480mm, $\psi_g = 0,04$ W/mK)

The air-water-wind tightness performances are estimated in reference to a window with 2 sashes WxH (1500x1500mm)

The acoustic insulation values are certified in reference to a window with 1 sash WxH (1230x1480mm)



FLAT - 50 mm glass
SOFT WOOD
U_f = 1,3 W/m²K

U _g W/m ² K	U _w W/m ² K
0,5	-> 0,8
0,6	-> 0,9
0,7	-> 1,0
0,8	-> 1,0
0,9	-> 1,1
1,0	-> 1,2
1,1	-> 1,3

TOTAL
FACADE SOLUTIONS

748 Marine Dr,
North Vancouver, BC

778 729 1575
contact@totalproject.ca