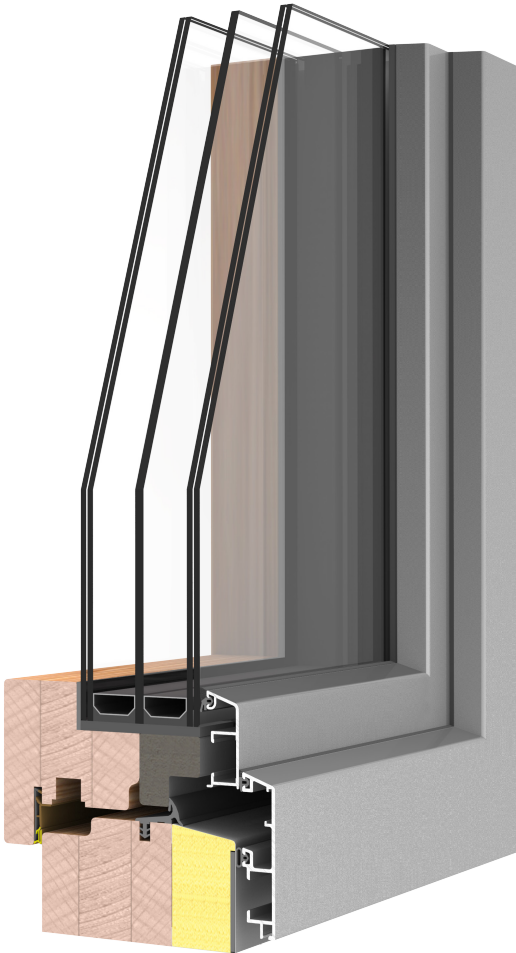






OPEN
IN

TOTAL FACADE SOLUTIONS

TRIPLE GLAZING **Uw=0,7 W/m²K**



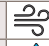


Material		Wood-Aluminium
----------	---	----------------

Thermal insulation		Uw= 0,7 W/m²K		Uw= 0,95 W/m²K
Insulating glass		Triple glazing thickness 54 mm		Triple glazing thickness 52 mm

Acoustic insulation		Not declared
---------------------	---	--------------

Security hardware		Up to RC2
-------------------	---	-----------

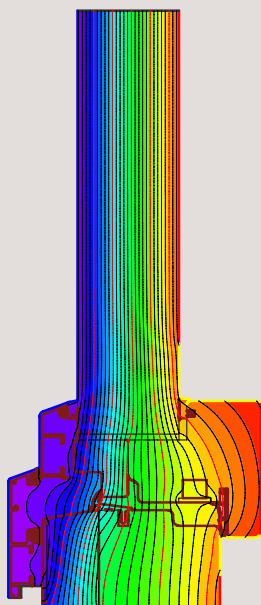
Dimensions in mm.	
Thickness of sash	111,5 x 70 mm
Thickness of frame	108,5 x 73 mm
Visible section sash + frame	106 mm
Visible section middle clamp	145,5 mm

Air permeability		CLASS 4
Water tightness		CLASS E1200
Wind load resistance		CLASS C5

 warm, temperate climate PHB CERTIFIED COMPONENT Passive House Institute	PASSIVE HOUSE INSTITUTE CERTIFICATION: WARM, TEMPERATE CLIMATE
	Component-ID: 0992wi04 Passive House Institute Dr. Wolfgang Feist, 64283 Darmstadt, Germany

The thermal transmittance values are certified according to
 UNI EN 10077/1-2018, UNI EN 10077/2-2018,
 UNI EN 10456-2008, UNI EN 673-2011 standards,
 in reference to a window with 1 sash
 WxH (1230x1480mm, $\psi_g = 0,04 \text{ W/mK}$)

The air-water-wind tightness performances are certified in reference to a
 window with 2 sashes WxH (1230x1480mm)



TERMOSCUDO - 52-54 mm glass
 SOFT WOOD
 $U_f = 0,82 \text{ W/m}^2\text{K}$

Ug W/m²K	Uw W/m²K
0,5	-> 0,7
0,6	-> 0,8
0,7	-> 0,8
0,8	-> 0,9
0,9	-> 1,0
1,0	-> 1,0
1,1	-> 1,1



748 Marine Dr,
 North Vancouver, BC

778 729 1575
 contact@totalproject.ca