

Sliding



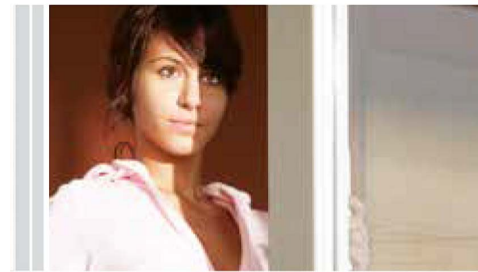
With the Basic Sliding System, homes are more spacious and free!



TOTAL
FACADE SOLUTIONS

TOTAL FACADE SOLUTIONS
748 Marine Dr. North Vancouver, BC V7M 1H3
Phone: +7 778-729-1575
Email: contact@totalproject.ca
www.totalfacadesolutions.com

Sliding



Basic Sliding Systems have been designed to provide easier access to the areas where they lead to and also a wider viewpoint.

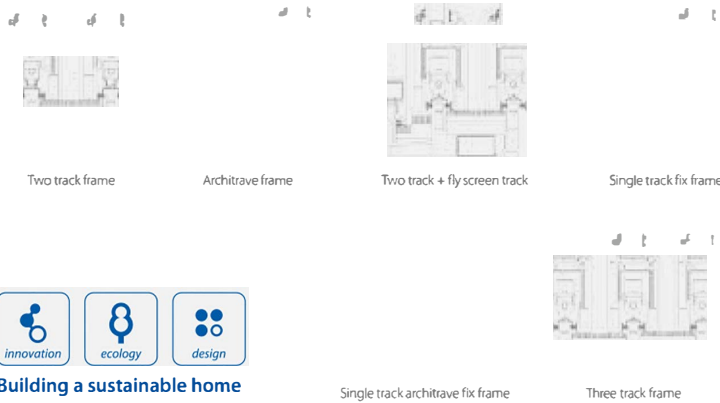
With the Sliding Window System viewpoint has been aimed for whereas with the Sliding Door Systems strength has been aimed for. In the design of the Sliding System, 'insulation' has been the forefront. Many profiles and auxiliary materials within the system have been specially designed by targeting insulation. Interlocking and joining profiles are equipped with TPE seals to ensure insulation.

The Sliding System offers many solutions such as sliding frame, sliding architrave frame, sliding frame with fly screen track, three tracks sliding frame, fixed sliding frame and fixed sliding architrave frame. In the Sliding System, two types of sliding sash profiles (3 chambers) are available according to window/door detail.

Sliding System can be combined with Zendow and Everest Max Systems by using auxiliary profiles. Moreover, with aluminium interlocking profiles, resistance against wind loads and making wider dimension windows are ensured. These aluminium profiles also complement the joinery from aesthetical point of view.

In the applications of double track sliding frame or fixed sliding frame windows, you can make fixed sections in the upper-lower and side parts. Sliding System also accommodate windows with venetian blinds.

All profiles in the system are in compliance with TS 5358 EN 12608 standards.



Building a sustainable home



Basic (MX) Colours				Solex (FX) Colours			
Cherry	Golden Oak	Walnut	Hazelnut	Golden Oak	Hazelnut	Macore	Bronze Platinum
Anthracite Grey	Cream	Dar Oak	Black Cherry	Azul	Pyrite	C	Ash Black
Vison	Antique Oak	Winchester	Winchester Oak	Grey Aluminium	Silver	Asphalt	Anthracite Grey



TOTAL
FACADE SOLUTIONS